

Medical/Professional Office Space for Lease

4600 Main Street, Snyder, New York



SNYDER COMMONS AMENITIES:

- Proximity to NYS Thruway (I-90) and the Youngmann Expressway (I-290).
- Conveniently located on Main Street in Snyder.
- Fully handicap accessible and elevator equipped.
- Pleasantly landscaped environment.
- Ideal medical/professional location.
- Ample on-site parking.

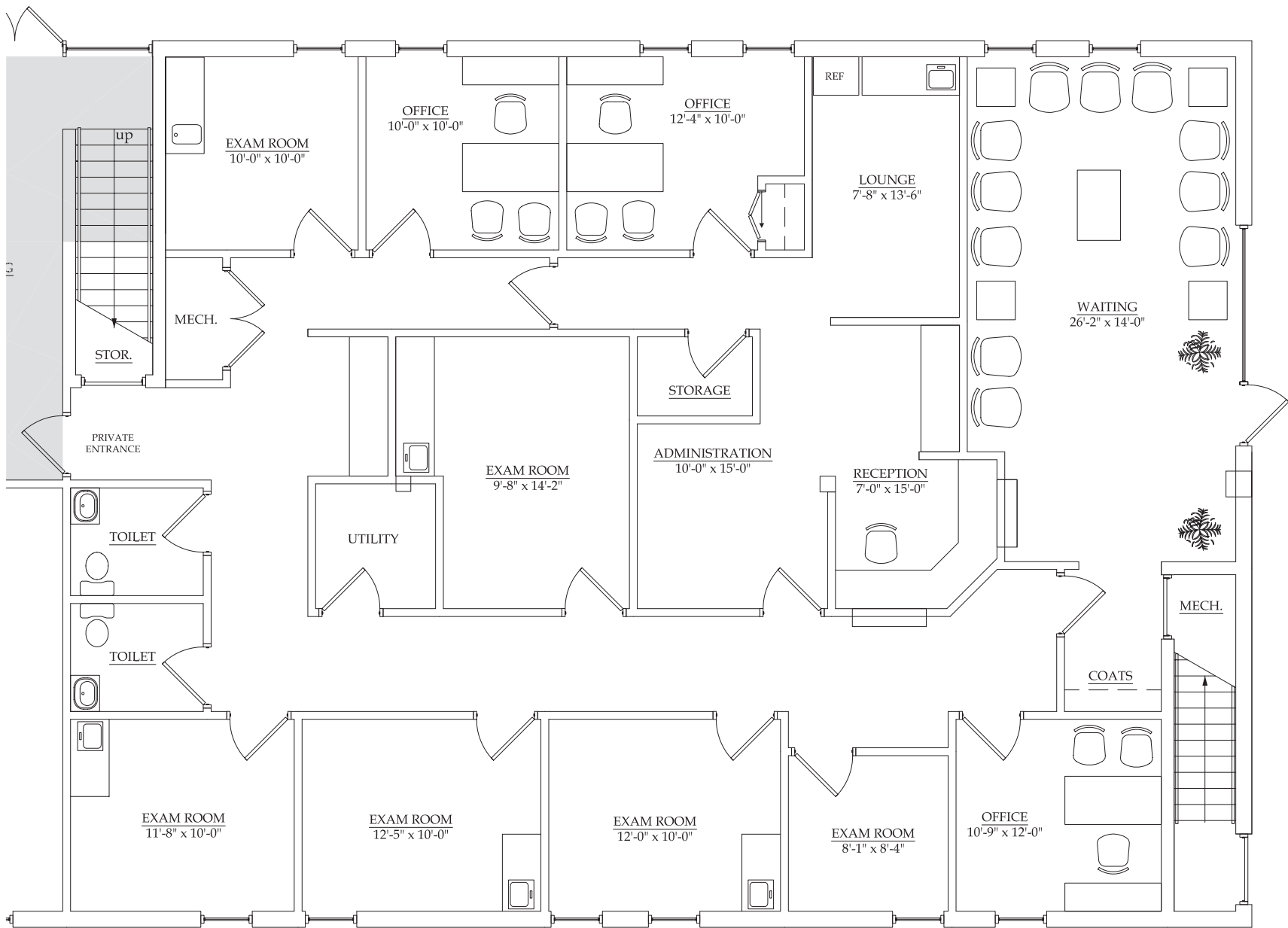


3,028 square foot suite now available

For leasing information, please call 716.633.2096 or visit www.iskalo.com.

(Please see reverse side)





SUITE 100 FLOOR PLAN